

WELSH

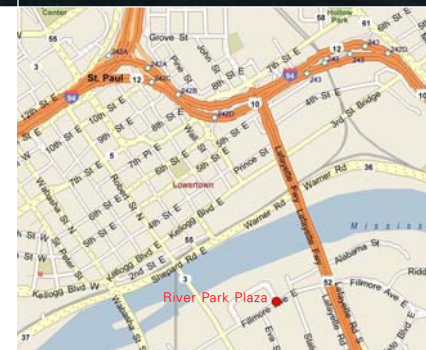


INNOVATION FROM THE GROUND UP

For Lease

River Park Plaza
10 River Park Plaza
St. Paul, Minnesota

- 5,000-140,000 SF Available
- Located On Bus Line
- Fitness Center with Showers
- Cafe and Convenience Store
- 24/7 Security
- Signage Available
- Located on the Mississippi Waterfront
- Spectacular Views of St. Paul Skyline
- Storage Space Available
- Ample Free Parking



For more information contact:

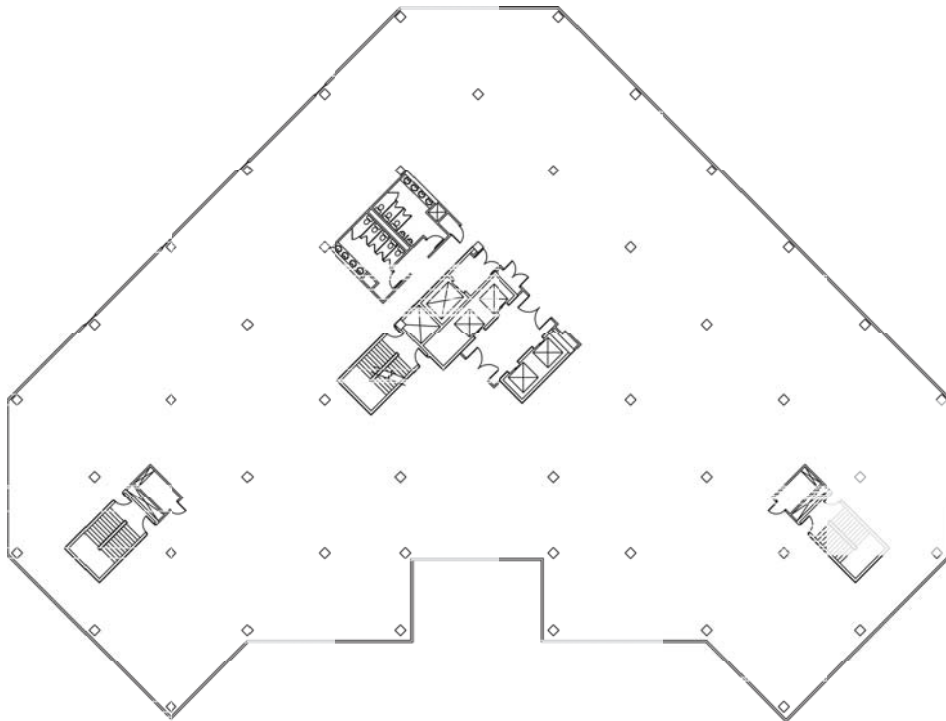
Eric Rapp, SIOR
952.837.3060
erapp@welshco.com

Ted Carlson, CCIM, SIOR
952.897.7788
tcarlson@welshco.com

NAIWELSH



Typical Floor Plate



For more information contact:

Eric Rapp, SIOR
952.837.3060
erapp@welshco.com

Ted Carlson, CCIM, SIOR
952.897.7788
tcarlson@welshco.com