

WELSH

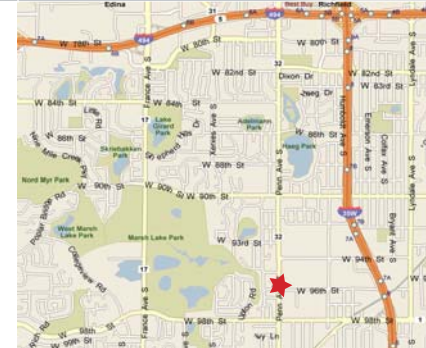


INNOVATION FROM THE GROUND UP

# For Lease

Lieberman Companies Building  
9549 Penn Avenue S  
Bloomington, Minnesota

- 74,744 total building square feet
- Excellent access and visibility to Interstate 35W and Penn Avenue
- Many space configurations available
- Ample parking
- Flexible lease terms



For more information contact:

Ryan Krzmarzick  
952.897.7746  
rlk@welshco.com

Ted Carlson, CCIM, SIOR  
952.897.7788  
tcarlson@welshco.com





For more information contact:

Ryan Krzmarzick  
952.897.7746  
rlk@welshco.com

Ted Carlson, CCIM, SIOR  
952.897.7788  
tcarlson@welshco.com



## Lieberman Companies Building For Lease

<b>Building Address:</b>	9549 Penn Avenue South Bloomington, Minnesota
<b>Building Square Feet:</b>	74,744 square feet total
<b>Currently Available:</b>	
<b>Suite A:</b>	2,195 square feet of office <ul style="list-style-type: none"><li>• Divisible to 189 square feet</li><li>• May be combined with Suite B</li></ul>
<b>Suite B:</b>	2,011 square feet of office <ul style="list-style-type: none"><li>• May be combined with Suite A</li></ul>
<b>Suite C:</b>	3,477 square feet of office/tech <ul style="list-style-type: none"><li>• May be combined with Suite D</li></ul>
<b>Suite D:</b>	3,009 square feet of office/tech <ul style="list-style-type: none"><li>• May be combined with Suite C</li></ul>
<b>Ceiling Height:</b>	9' - 15' clear
<b>Gross Rental Rates:</b>	\$10.00 psf office* \$4.00 psf office/tech* *Includes utilities
<b>Year Built:</b>	1961

- Comments:**
- Excellent access and visibility to Interstate 35W and Penn Avenue
  - Ample parking
  - Many space configurations available
  - Close to local retail amenities

**Ryan Krzmarzick**

- 952.897.7746
- [rlk@welshco.com](mailto:rlk@welshco.com)

**Ted Carlson, CCIM, SIOR**

- 952.897.7788
- [tcarlson@welshco.com](mailto:tcarlson@welshco.com)

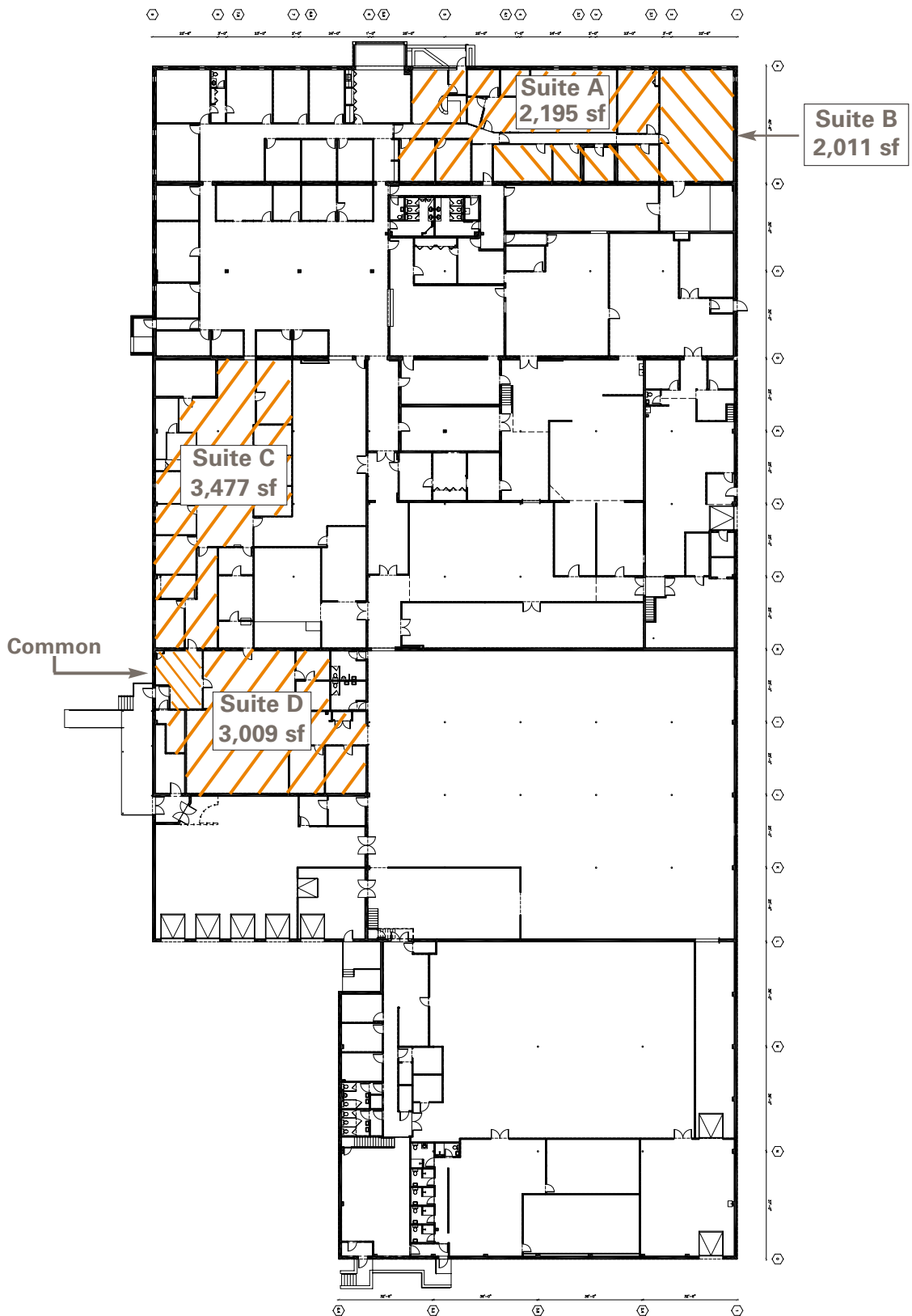
[www.welshco.com](http://www.welshco.com)

4350 Baker Road, Suite 400

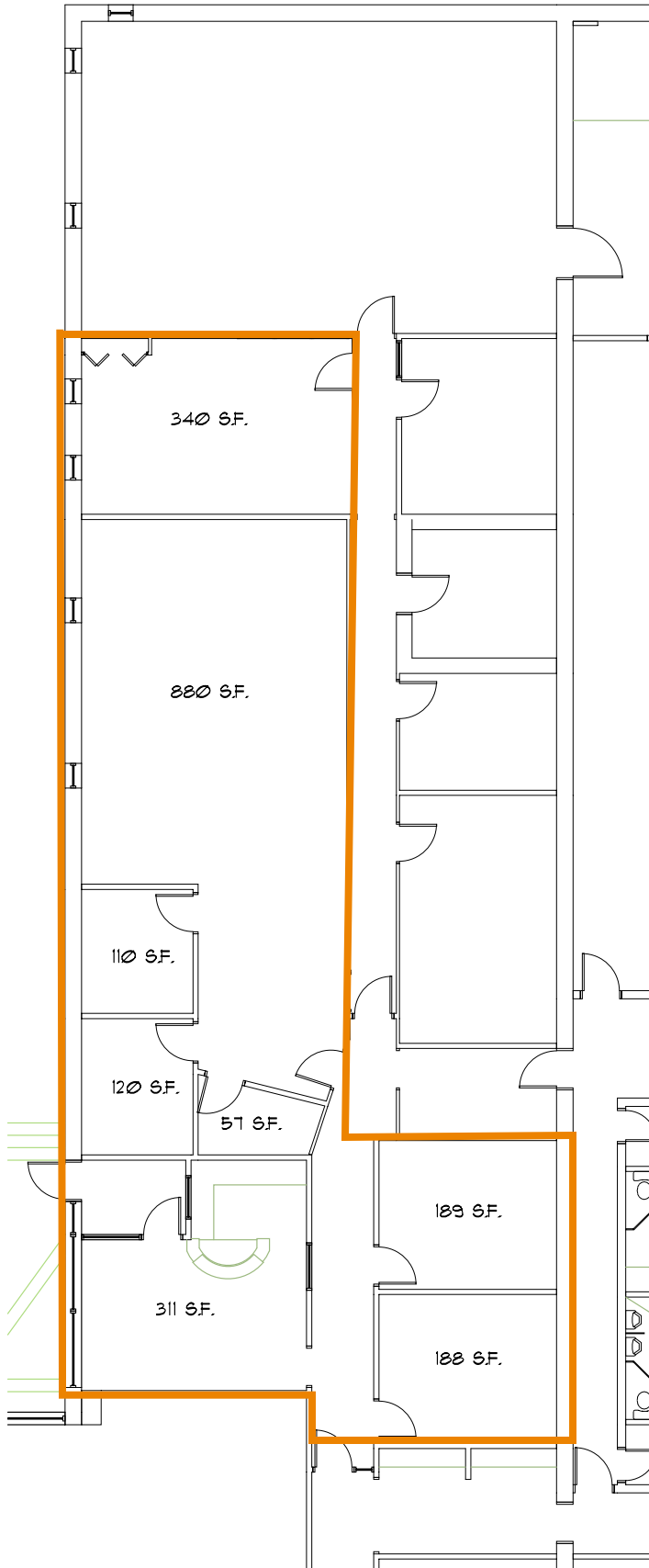
Minnetonka, MN 55343

Tel: 952.897.7700

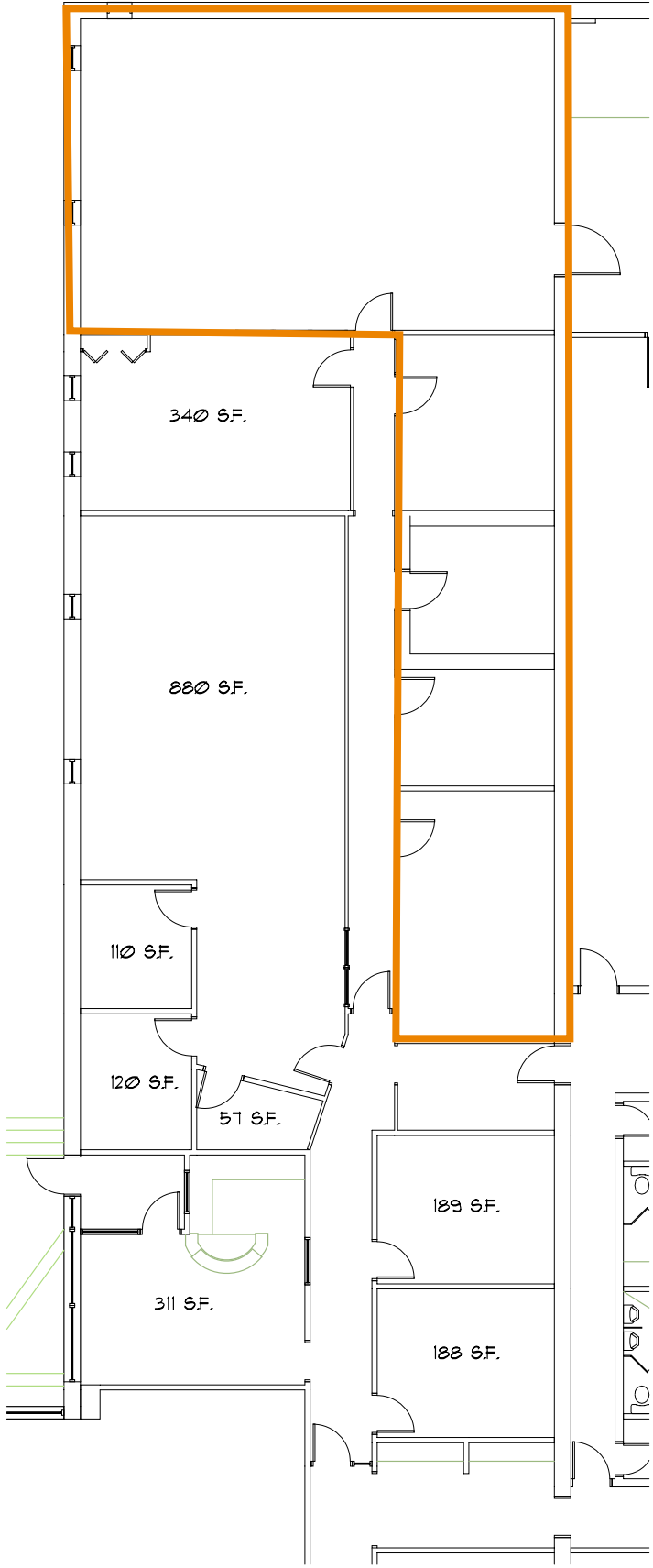
Fax: 952.842.7700



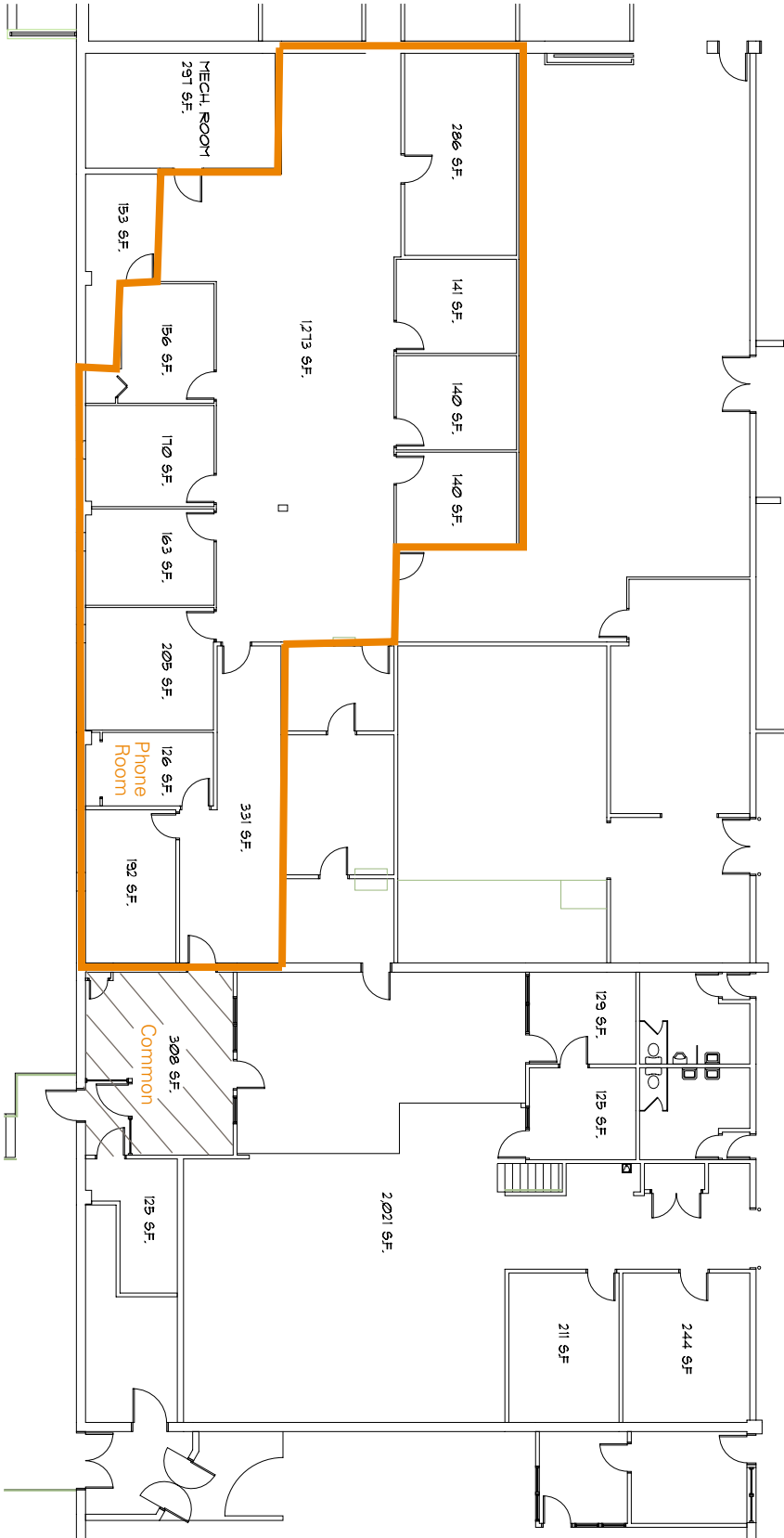
**Suite A**  
**2,195 sf total**



**Suite B**  
**2,011 sf total**



**Suite C**  
**3,477 SF Total**



**Suite D**  
**3,009 sf total**

