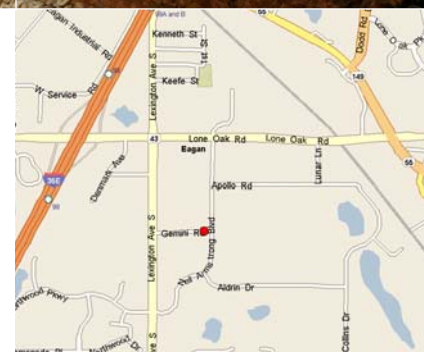




For Lease

1027 Gemini Road
Eagan, Minnesota

- 1,824 square feet of office space available
- 33,792 total building square feet
- Built in 1997
- Convenient to many arterial highways: I-35E, Highway 55, Highway 149 (Dodd Road)
- Ample parking
- Close proximity to restaurants, retail and MSP International Airport
- Exterior suite entrance
- Furniture available



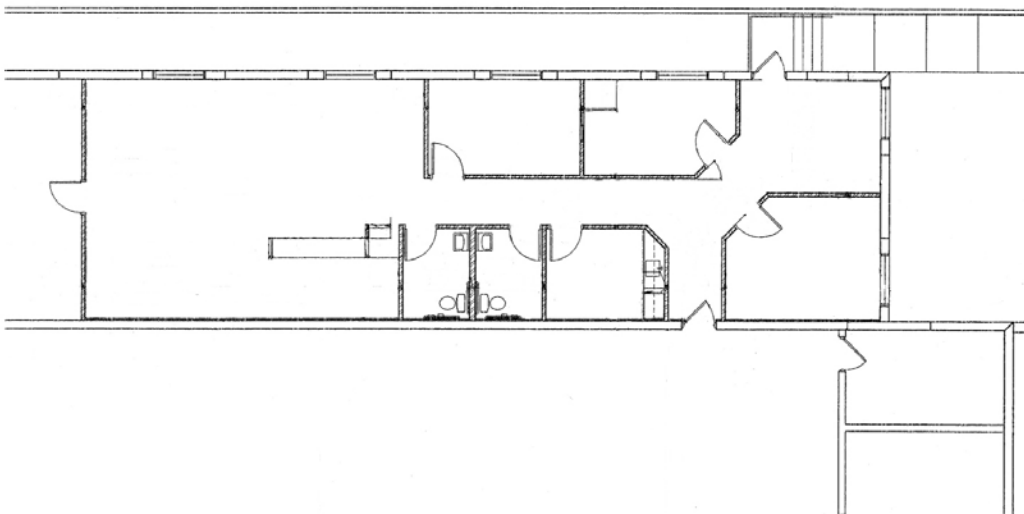
For more information contact:

Danielle Loffler
952.837.3065
dloffler@welshco.com

Ted Carlson, CCIM, SIOR
952.897.7788
tcarlson@welshco.com



1,824 square feet available



For more information contact:

Danielle Loffler
952.837.3065
dloffler@welshco.com

Ted Carlson, CCIM, SIOR
952.897.7788
tcarlson@welshco.com

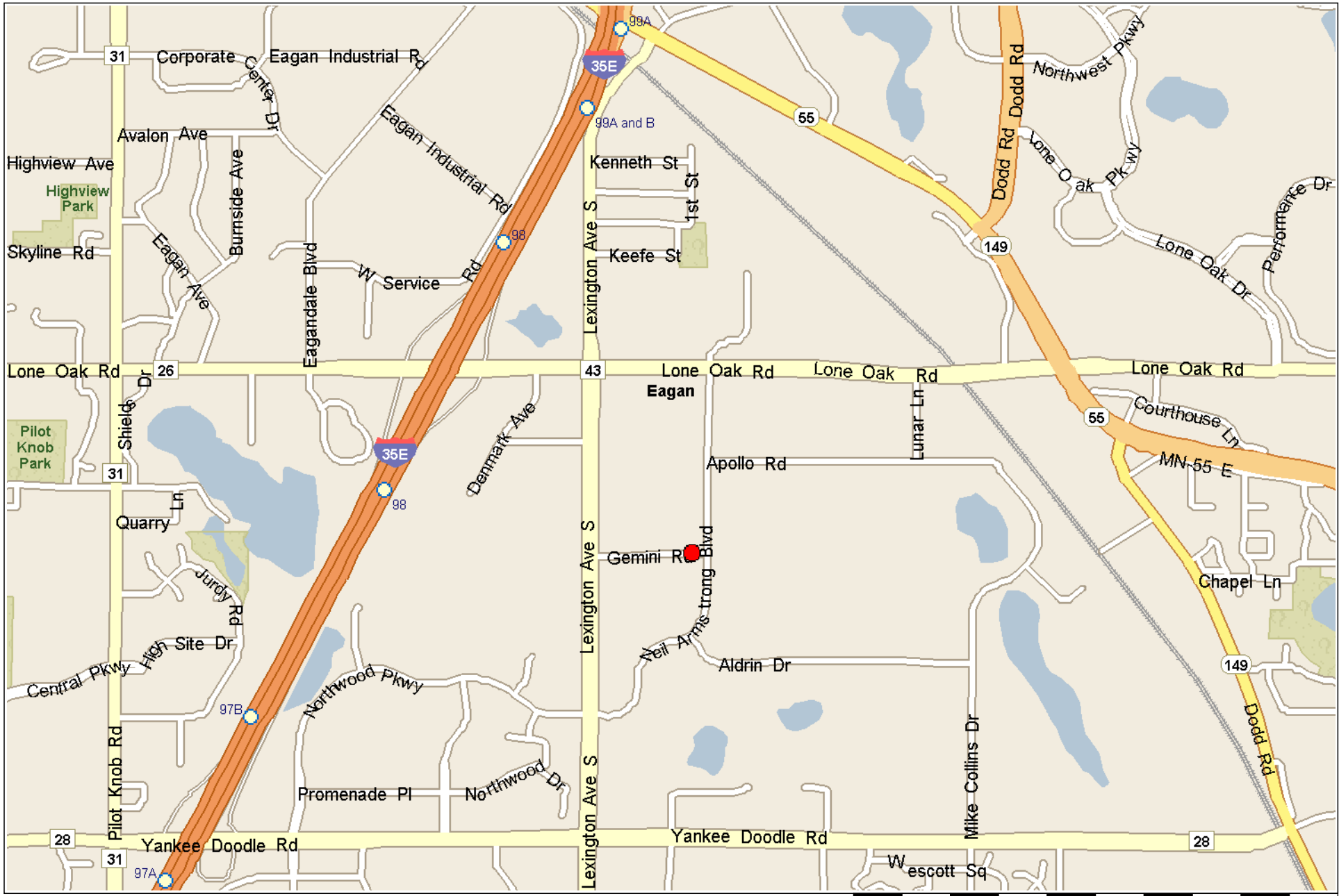


1027 Gemini Road For Lease

Building Address:	1027 Gemini Road Eagan, Minnesota 55121	Danielle Loffler <ul style="list-style-type: none">• 952.837.3065• dloffler@welshco.com
Parcel ID#:	102250223105	
Currently Available:	1,824 square feet office	Ted Carlson, CCIM, SIOR <ul style="list-style-type: none">• 952.897.7788• tcarlson@welshco.com
Building Square Feet:	33,792 square feet total	
Land Area:	2.44 acres	www.welshco.com
Lease Rate:	\$11.00 psf gross	900 Second Avenue South Suite 1625 Minneapolis, MN 55402 Tel: 952.897.7700 Fax: 952.842.7700
Year Built:	1997	
Parking Ratio:	4.39/1,000	
Building Type:	Multiple Tenant Industrial / Light Manufacturing	
Highlights:	<ul style="list-style-type: none">• Convenient to many arterial highways: I-35E, Highway 55 and Highway 149 (Dodd Road)• Close proximity to restaurants, retail and MSP International Airport• Exterior suite entrance• Furniture available	



1027 Gemini Road



Copyright © and (P) 1988–2006 Microsoft Corporation and/or its suppliers. All rights reserved. <http://www.microsoft.com/mappoint/>
Portions © 1990–2005 InstallShield Software Corporation. All rights reserved. Certain mapping and direction data © 2005 NAVTEQ. All rights reserved. The Data for areas of Canada includes information taken with permission from Canadian authorities, including: © Her Majesty the Queen in Right of Canada, © Queen's Printer for Ontario. NAVTEQ and NAVTEQ ON BOARD are trademarks of NAVTEQ. © 2005 Tele Atlas North America, Inc. All rights reserved. Tele Atlas and Tele Atlas North America are trademarks of Tele Atlas, Inc.